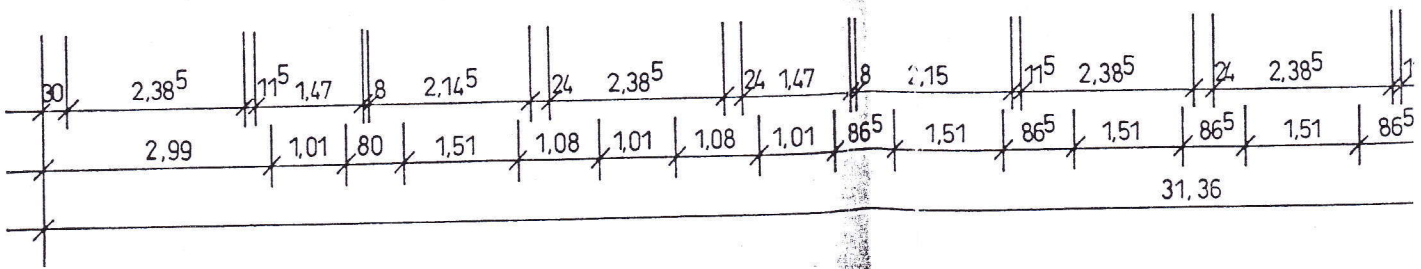
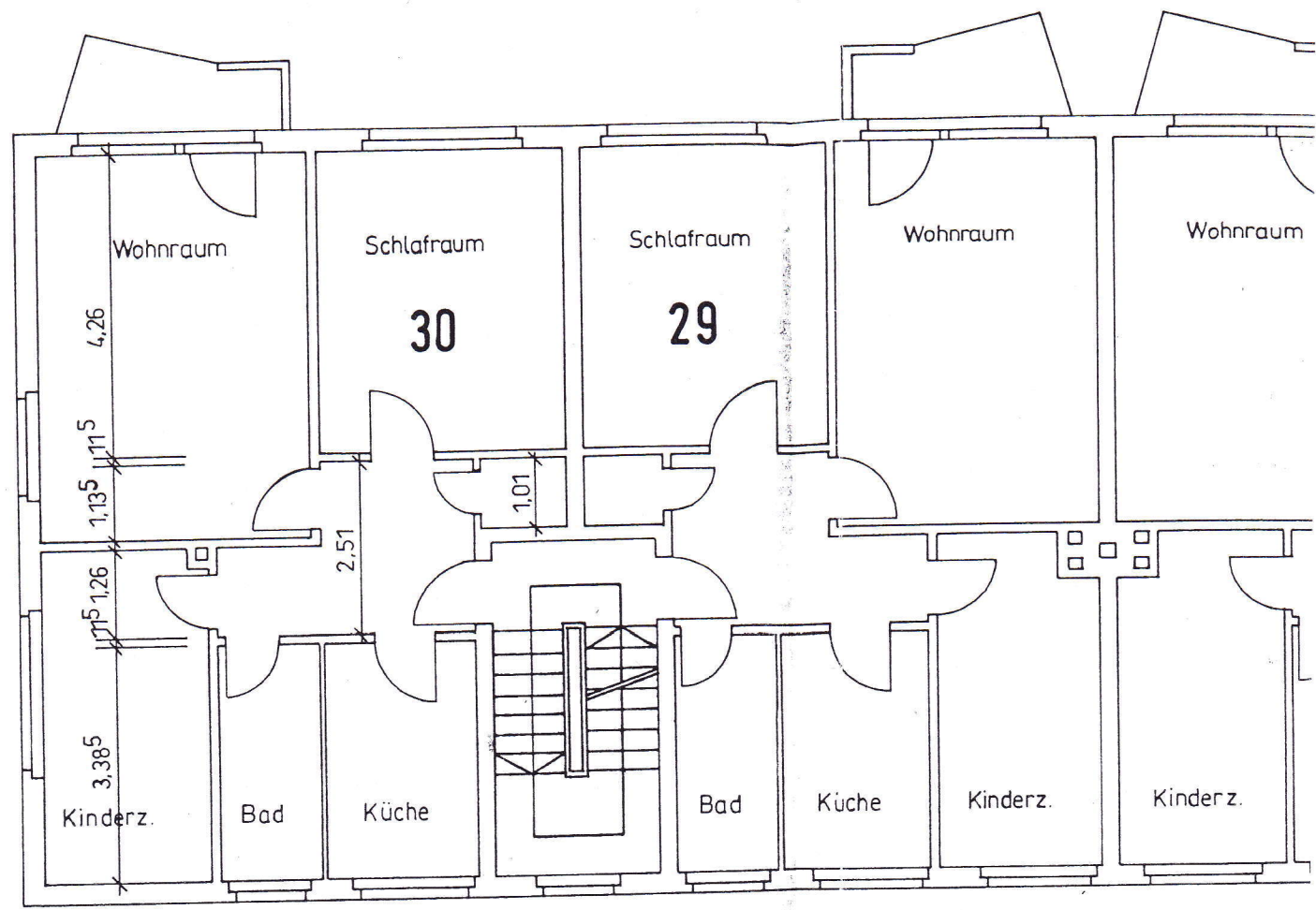
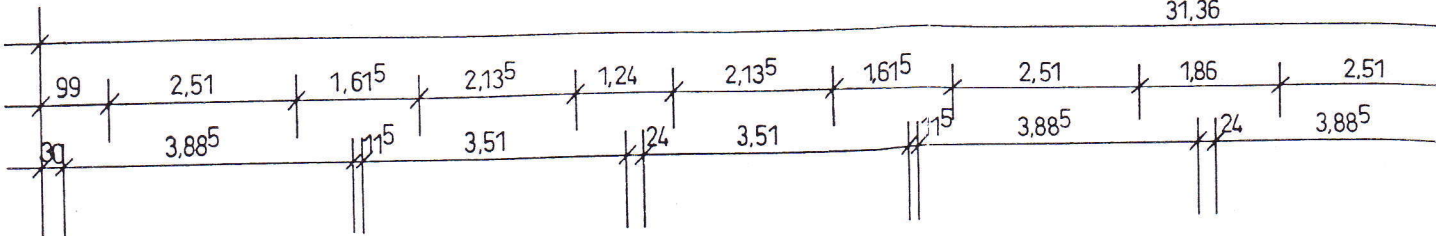


31,36



Wohnungstüren 93 / 205
 Wohn- u. Schlafraum 88⁵ / 200
 Kind, Küche, Bad 76 / 200
 Besenkammer 65 / 195
 alle Fenster 1,38⁵ hoch

AE
Albert Eisele
 Haus- & Grundstücksmakler, IVD
 Oberechasse 25 - 22848 Norderstedt
 Tel: 040/524 90 36 - Fax: 040/529 44 26
 www.alberteisele.de - alberteisele@wtinet.de